

# Port Stephens Council

ADMINISTRATION BUILDING AND COUNCIL CHAMBERS

Telephone Enquiries:  
Community Planning Dept  
Please Quote File No:  
4350-31

Ms Jean E Olley,  
Interim Steering Committee, Tilligerry Habitat  
7 President Wilson Walk  
TANILBA BAY 2301

Dear Madam

Re: **Amendment No 66 to Port Stephens Local Environmental Plan  
1987**

I refer to your letter dated 7 June 1993 relating to the above amendment which proposed to rezone land between Mallabula and Tanilba Bay (being Lots 289 and 290, DP 41306) from Special Business Zone 3(b) and Public Recreation Zone 6(a) to Environmental Protection [Coastal Lands] Zone 7(f1) and Environmental Protection [Wildlife Refuge] Zone 7(k) in order to reflect the environmental significance and tourism potential of the area.

I advise that on 23 August 1993 the Minister approved the above amendment and it subsequently appeared in the NSW Government Gazette on 3 September 1993. A copy of the Amendment is attached.

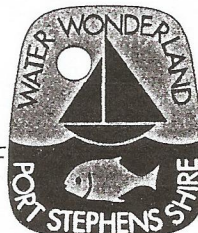
Should you require any further information in respect to this matter, please contact Mr Stephen Leathley of Council's Community Planning Department on 830382.

Yours faithfully

*E K Campbell*

E K Campbell *per DM*  
General Manager

sl/dm  
enc

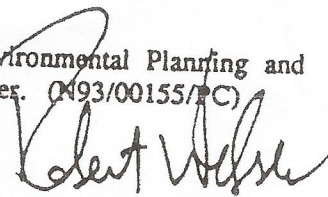


16 September 1993

## ENVIRONMENTAL PLANNING AND ASSESSMENT ACT 1979

PORT STEPHENS LOCAL ENVIRONMENTAL PLAN 1987  
(AMENDMENT No. 66)

I, the Minister for Planning, in pursuance of section 70 of the Environmental Planning and Assessment Act 1979, make the local environmental plan set out hereunder. (1993/00155/PC)



Minister for Planning.

Sydney, 23 August, 1993.

---

**Citation**

1. This plan may be cited as Port Stephens Local Environmental Plan 1987 (Amendment No. 66).

**Aims, objectives etc.**

2. This plan aims to rezone the land to which this plan applies from Zone No. 3(b) (Special Business Zone) and Zone No. 6(a) (Public Recreation Zone) to Zone No. 7(f1) (Environmental Protection [Coastal Lands] Zone) and Zone No. 7(k) (Environmental Protection [Wildlife Refuge] Zone) under Port Stephens Local Environmental Plan 1987, in order to reflect the environmental significance and tourism potential of the area.

**Land to which plan applies**

3. This plan applies to land within the Shire of Port Stephens, being Lots 289 and 290, D.P. 41306, as shown coloured orange and lettered 7(f1) and 7(k) on the map marked "Port Stephens Local Environmental Plan 1987 (Amendment 'No. 66)" deposited in the office of the Council of the Shire of Port Stephens.

**Relationship to other environmental planning instruments**

4. This plan amends Port Stephens Local Environmental Plan 1987 in the manner set out in clause 5.

**Amendment of Port Stephens Local Environmental Plan 1987**

5. Port Stephens Local Environmental Plan 1987 is amended by inserting, in appropriate order, at the end of the definition of "the map" in clause 5(1) the following words:

Port Stephens Local Environmental Plan 1987 (Amendment No. 66)

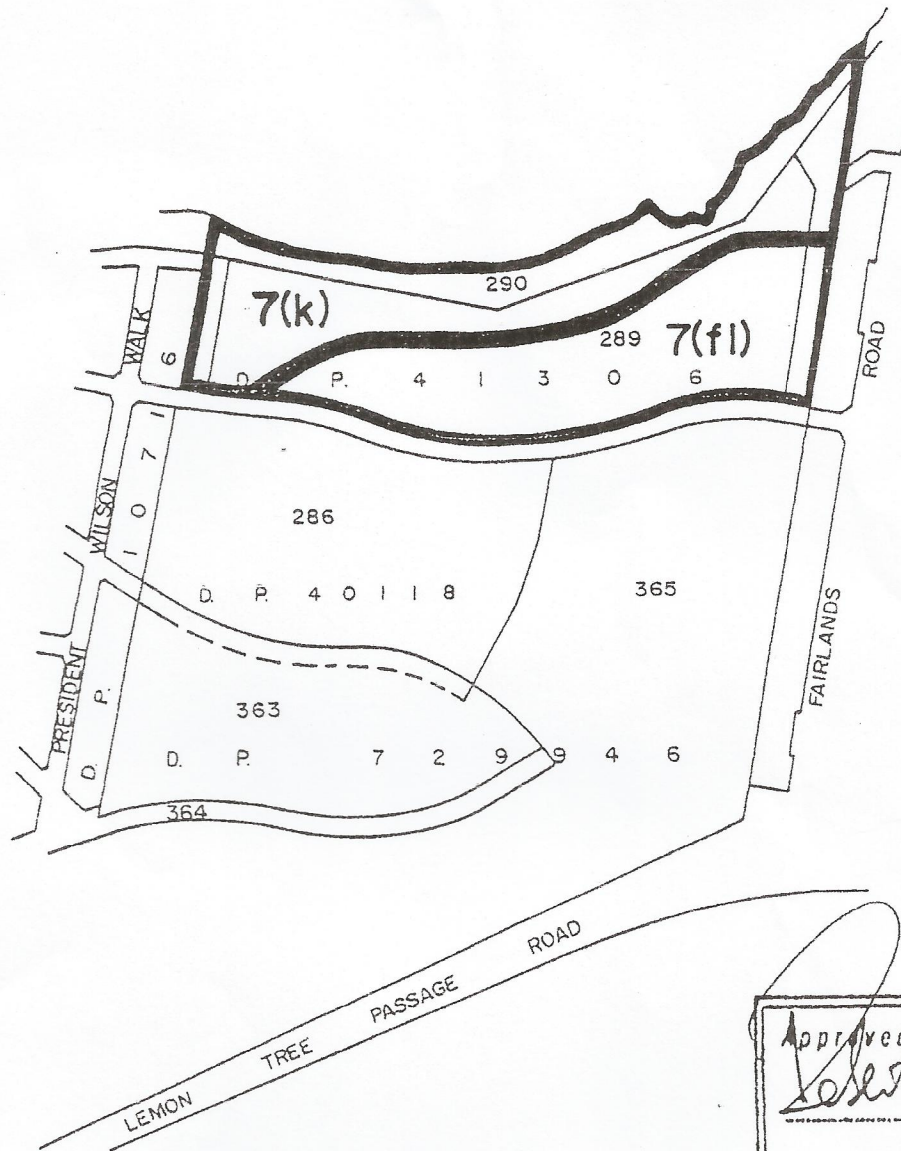
---

7(f1)

ENVIRONMENTAL PROTECTION - Coastal Lands

7(k)

ENVIRONMENTAL PROTECTION - Wildlife Refuge



SCALE 1: 8000

LOCALITY: TANILBA BAY

Approved  
*Robert Welsh*  
 Minister  
 23/1/92

### ENVIRONMENTAL PLANNING & ASSESSMENT ACT, 1979

### AMENDMENT No. 66

### PORT STEPHENS

### LOCAL ENVIRONMENTAL PLAN 1987

DRAWN BY KG	DATE 30/3/93	STATEMENT OF RELATIONSHIP WITH OTHER PLANS  AMENDS LEP 1987 - PORT STEPHENS
SUPERVISING DRAFTSMAN	DATE	
PLANNING OFFICER SL	DATE	
FILE No. CCL. 4350-31	DEPT. N93/124	PUBLISHED IN GOVERNMENT GAZETTE OF
CERTIFICATE ISSUED UNDER SEC. 65 E.P.A. ACT, 1979	DATE	CERTIFIED IN ACCORDANCE WITH THE ENVIRONMENTAL PLANNING & ASSESSMENT ACT
CERTIFICATE PLAN NUMBER		<i>Amended 9/7/1</i>